

**Vortexuality** is a socially driven feed reader that allows users to gather information from websites and social networks as well as traditional RSS style feed sources. Multiple data sources can be combined into a single list, which can be further filtered to look for (or exclude) specific search terms. Users can maintain multiple lists. Each list can be shared as it's own data source, or kept private by the user. Individual articles can also be shared via social networks or saved for later use.

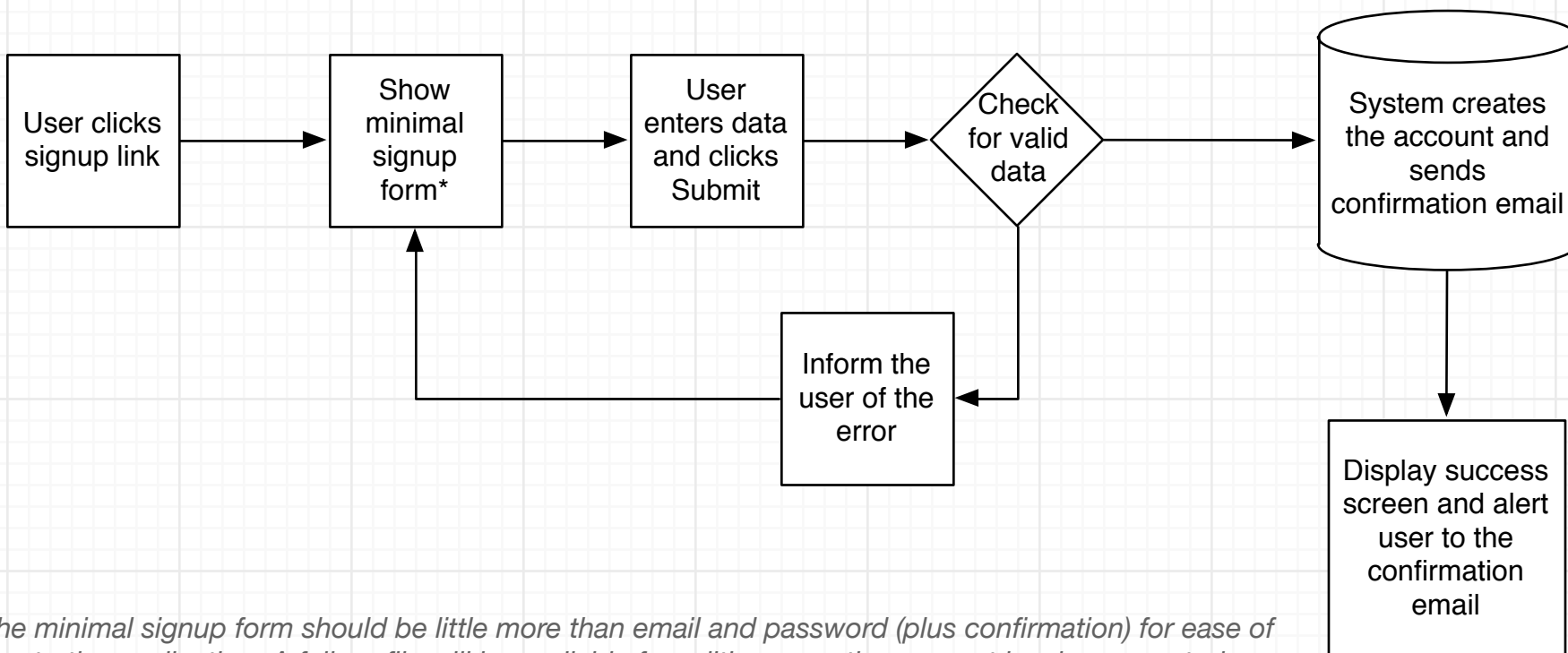
This architecture document serves as a blueprint for the **Vortexuality** web application. It is intended for use both as an evaluation tool for investors and a roadmap for developers. The information included in this document is split into four basic sections:

**User Scenarios and Flows** - These describe the users basic interactions with the site, how the system responds to those actions, points in the process where data should be stored and how the user is notified of the success or failure of a give action.

**Site Map** - The site map provides an overview of the pages required for the site, along with notes on any access restrictions, required components or specialized functionality.

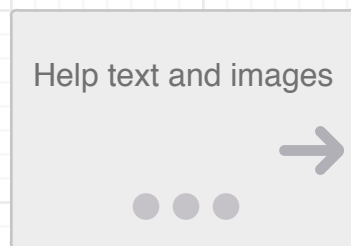
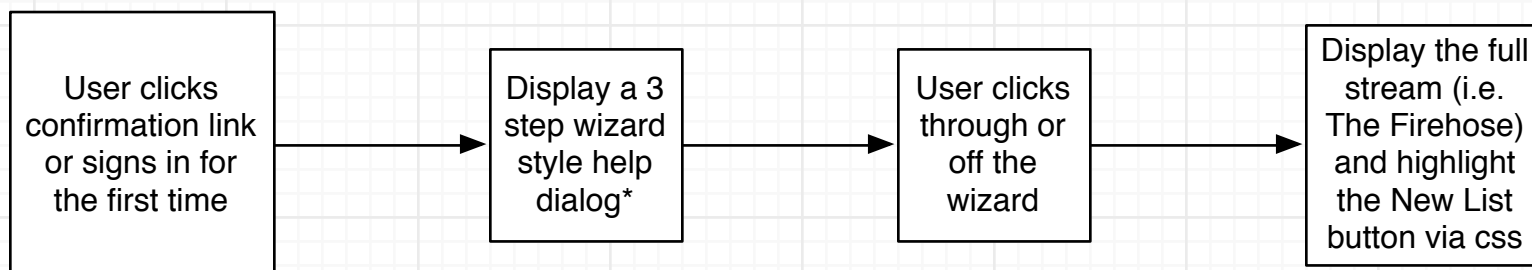
**Wireframes** - The wireframes are a block level representation of the various pages on the site. **These wireframes are not intended as a final design** (i.e. they are not intended to be pretty). They simply show the necessary informational layout for a given page. They are useful when discussing the sites final appearance with a designer as they provide a visualization of the various visual components the site needs to display. The wireframes should be matched one to one with the various elements of the site map section, giving the designer a solid grounding in the structure and scope of the required work.

**Technology Recommendations** - This final section will describe the technologies that Twelve Foot Guru recommends for the creation of this application. This will include recommendations for database, hosting, programming language, libraries and so forth. Where possible multiple options will be presented with both pros and cons to the technology.



*\* The minimal signup form should be little more than email and password (plus confirmation) for ease of entry to the application. A full profile will be available for editing once the account has been created.*

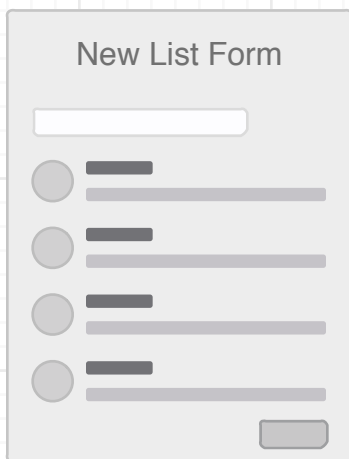
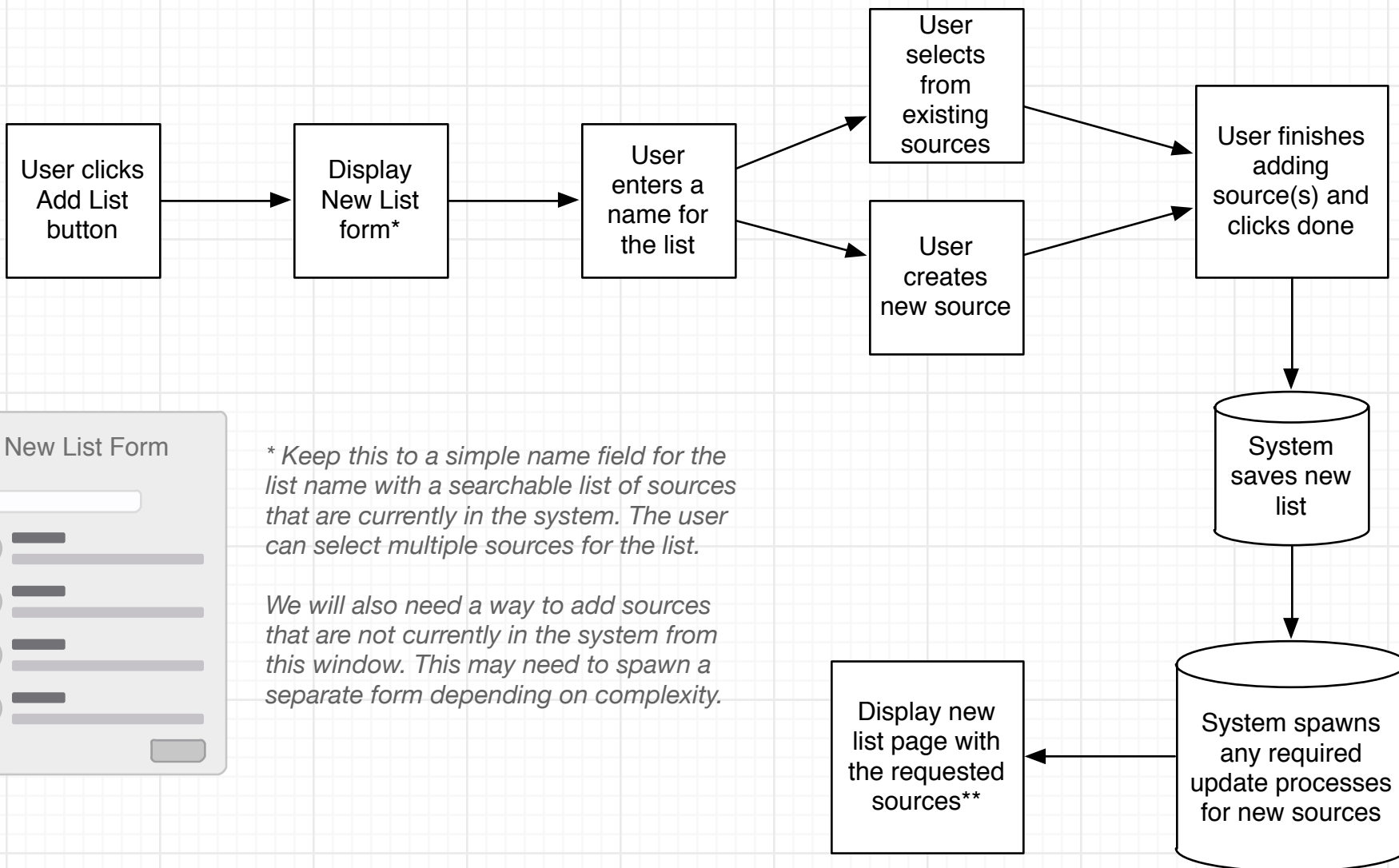




*\* The wizard should be as few steps as possible. Explain the main page. Explain adding a list. Explain adding a feed. A short paragraph with just an overview.*

*Clicking away from the wizard should dismiss it.*



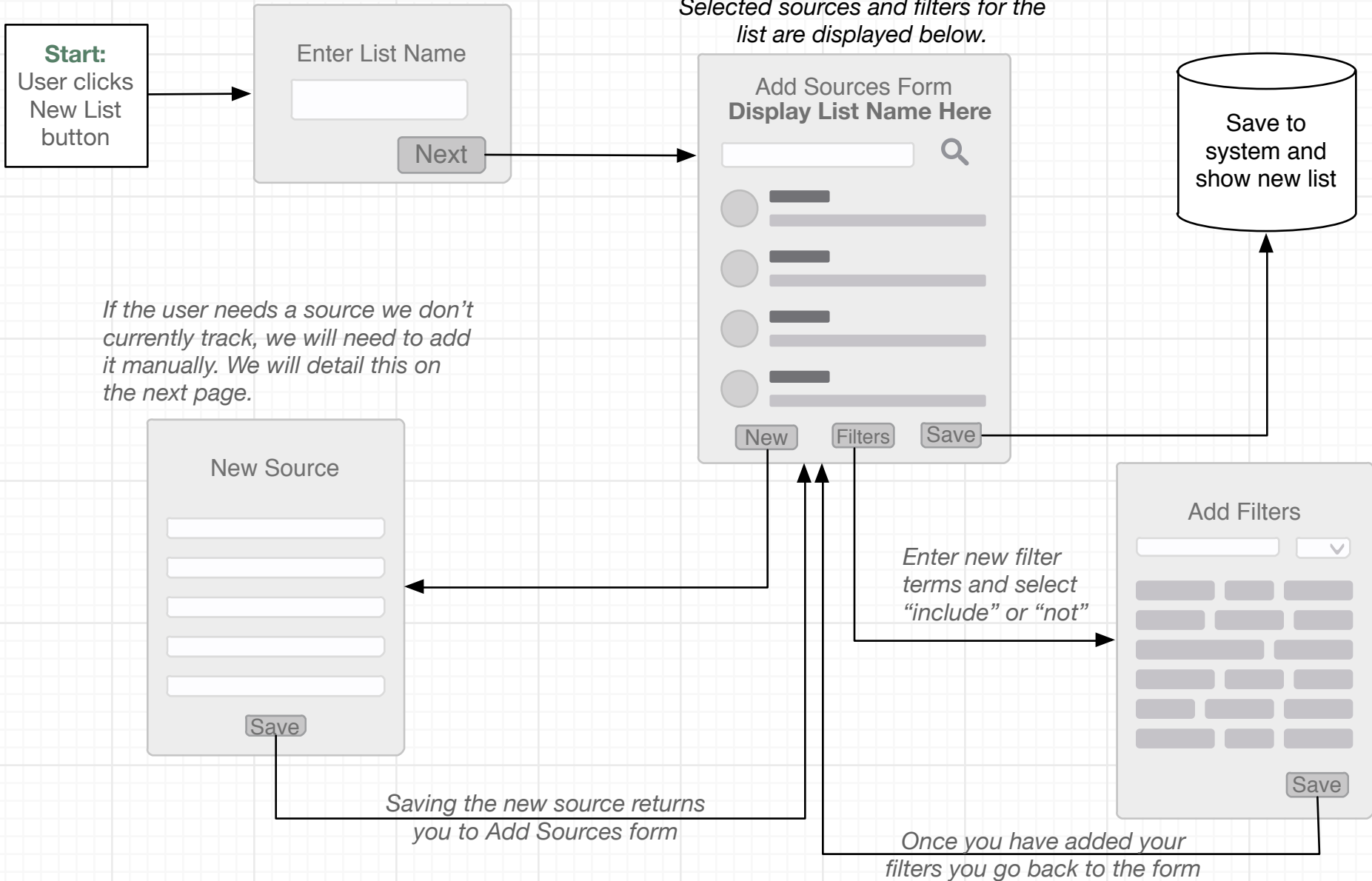


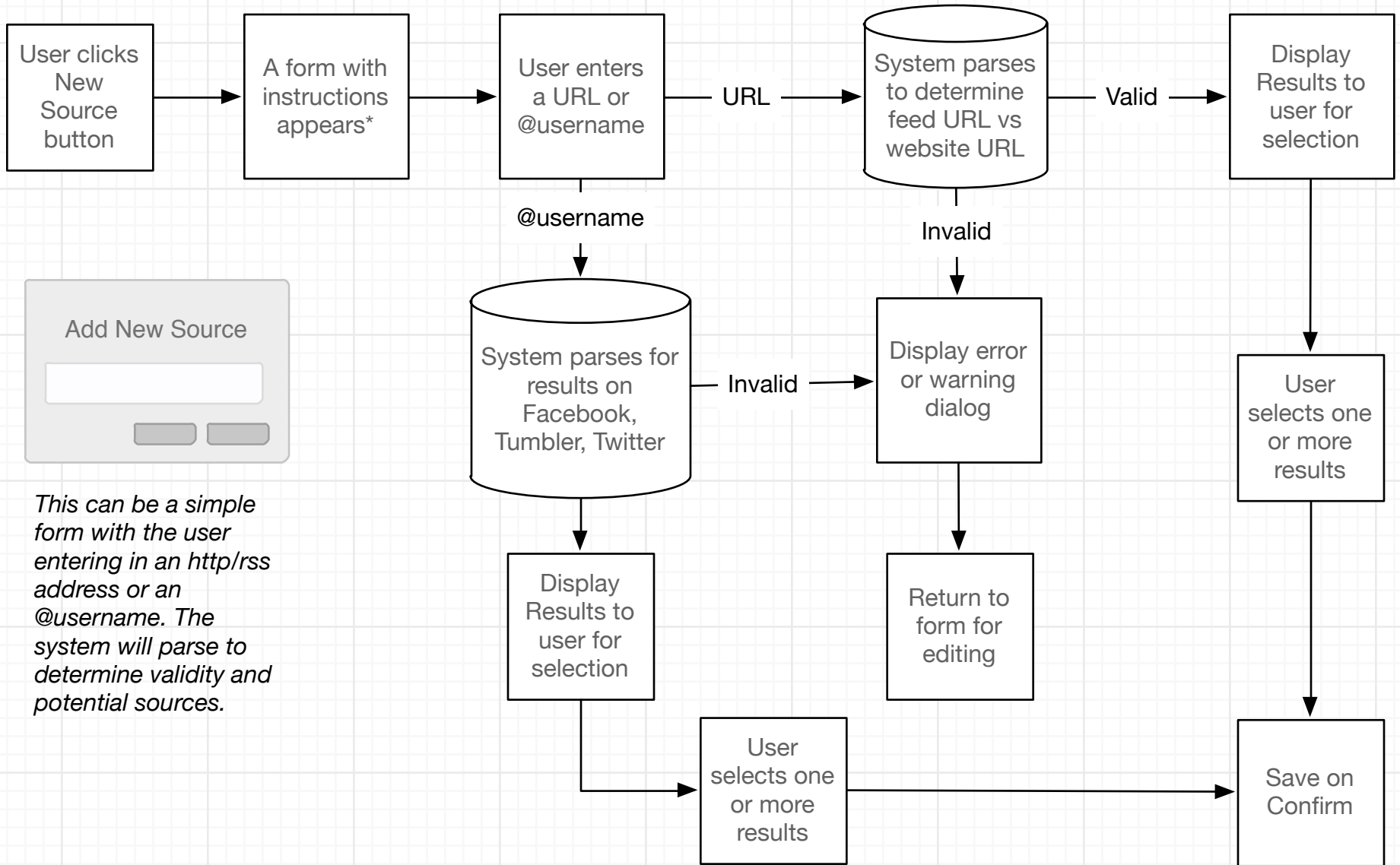
\* Keep this to a simple name field for the list name with a searchable list of sources that are currently in the system. The user can select multiple sources for the list.

We will also need a way to add sources that are not currently in the system from this window. This may need to spawn a separate form depending on complexity.

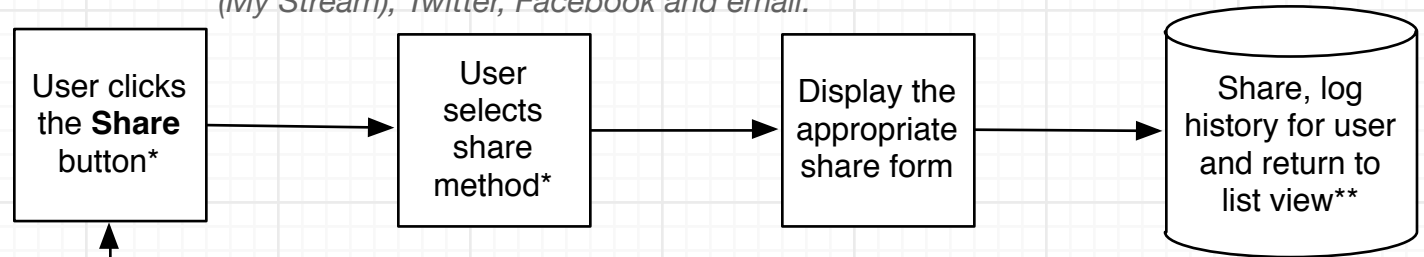
\*\* We will need to alert the user here if new sources are being scanned and set expectations for when this will update.



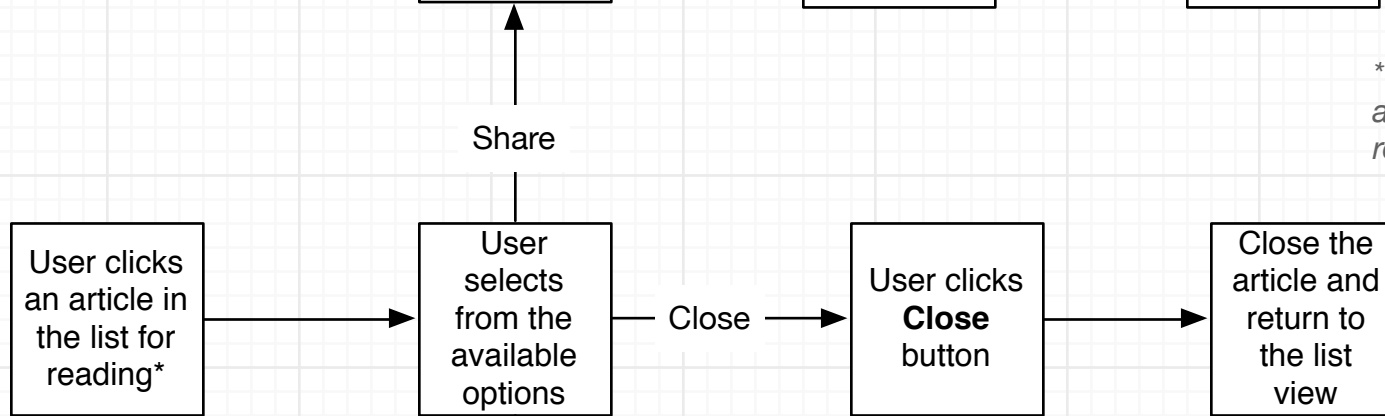




*\*For phase 1 this should be limited to local share (My Stream), Twitter, Facebook and email.*



*\*\* The system should keep a list of articles shared and read for later reference.*



*\* For both read and share, the server will mark the article appropriately in the user's history*

